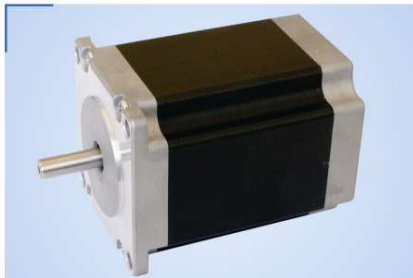


## 1.8° 57HS 两相混合式步进电机

### 1.8° 57mm (NEMA23) 2 phase Hybrid Stepper Motor

#### 基本性能/General Specification:

项目(Item)	性能(Specifications)
步距角(Step Angle)	1.8°
温升(Temperature Rise)	80°Cmax
环境温度 ( Ambient Temperature )	-20°C~+50°C
绝缘电阻(Insulation Resistance)	100 MΩ Min. .500VDC
电气强度(Dielectric Strength):	500VAC for 1minute
径向间隙(Shaft Radial Play)	0.02Max. (450g-load)
轴向间隙(Shaft Axial Play)	0.08Max. (450g-load)
最大径向压力(Max. radial force)	75N (20mm from the flange)
最大轴向压力(Max. axial force)	15N



#### 电机规格/Electrical Specification:

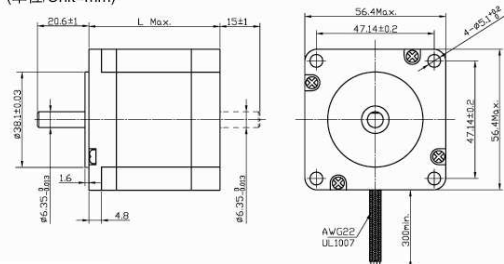
型号 Model No.	步距角 Step Angle (°)	长度 Motor Length (L)mm	电流 Current /Phase A	电阻 Resistance /Phase Ω	电感 Inductance /Phase mH	静转矩 Holding Torque N.m	引线数 # of Leads No.	定位转矩 Detent Torque g.cm	转子惯量 Rotor Inertia g.cm <sup>2</sup>	重量 Motor Weight Kg
57HS41-1006	1.8	41	1	5.2	5.5	0.39	6	250	150	0.47
57HS41-2006	1.8	41	2	1.4	1.4	0.39	6	250	150	0.47
57HS41-3006	1.8	41	3	0.63	0.6	0.39	6	250	150	0.47
57HS41-2804	1.8	41	2.8	0.7	1.4	0.55	4	250	150	0.47
57HS51-1006	1.8	51	1	6.6	8.2	0.72	6	300	230	0.59
57HS51-2006	1.8	51	2	1.65	2.2	0.72	6	300	230	0.59
57HS51-3006	1.8	51	3	0.74	0.9	0.72	6	300	230	0.59
57HS51-2804	1.8	51	2.8	0.83	2.2	1.01	4	350	280	0.68
57HS56-1006	1.8	56	1	7.4	10	0.9	6	350	280	0.68
57HS56-2006	1.8	56	2	1.8	2.5	0.9	6	350	280	0.68
57HS56-3006	1.8	56	3	0.75	1.1	0.9	6	350	280	0.68
57HS56-2804	1.8	56	2.8	0.9	2.5	1.26	4	350	280	0.68
57HS76-1006	1.8	76	1	8.6	14	1.35	6	600	440	1.1
57HS76-2006	1.8	76	2	2.25	3.6	1.35	6	600	440	1.1
57HS76-3006	1.8	76	3	1	1.6	1.35	6	600	440	1.1
57HS76-2804	1.8	76	2.8	1.13	3.6	1.89	4	600	440	1.1
57HS82-3004	1.8	82	3.0	1.2	4	2.2	4	1000	600	1.2
57HS82-5004	1.8	82	5	0.6	1.5	2.2	4	1000	600	1.2
57HS112-3004	1.8	112	3.0	1.6	6.8	2.8	4	1200	800	1.4
57HS112-4204	1.8	112	4.2	0.9	3.8	2.8	4	1200	800	1.4

以上仅为代表产品，特殊要求产品可根据客户要求订制。

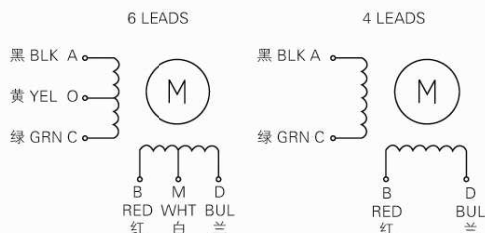
Above only for representative products, products of special request can be made according to the customer request.

#### 电机外型图/Dimensions:

(单位/Unit=mm)



#### 接线图/Wiring Diagram:



## JK1545 两相混合式步进电机驱动器

### 2 phase hybrid stepper motor driver

#### 概述/Descriptions

JK1545 两相混合式步进电机驱动器，采用直流20~50V 输入，适合驱动电压在直流20V~50V，电流小于4.5A，外径在57mm的混合式步进电机使用。此驱动器采用交流伺服驱动器的电流环进行细分控制，电机低速运行平稳，几乎没有震动和噪音。广泛适合于各类CNC机械，机器人，点钞机行业。

JK1545 is a type of 2 phase hybrid stepper motor driver, this driver input voltage is 20~50V DC ,suit for input voltage both for 20~50V DC, current less 4.5A, diameter is 57mm 2 phase hybrid stepper motor .this driver that adopts similar to the Circuit of servo control which enables the motor to run smoothly almost without noise and vibration. It is widely used in CNC machine , robots, and money counting and machine.



#### 特点/Features

- 平均电流控制，两相正弦电流输出
- 直流20~50V
- 光电隔离信号输入、输出
- 有过压、欠压、过流、相间短路保护功能
- 十四档细分和自动半流功能
- 八档输出相电流设置
- 可驱动任何4.5A相电流以下两相、四相混合式步进电机
- 主要适合驱动57mm(NEMA23)步进电机
- Average current control, 2 phase sinusoidal output current drive
- Supply voltage from 20VDC~50VDC
- Opto-isolated signal I/O
- Overvoltage, under voltage, overcurrent, phase short circuit protection
- 14 channels subdivision and automatic idle-current reduction
- 8 channels output phase current setting
- Can drive 2 phase and 4 phase hybrid stepper motor when phase current less than 4.5A
- Mainly for 57mm(NEMA23) 2 phase stepper motor

#### 性能指标

输入电压	直流20~50V
输出电流	1.5A~4.5A
温度	工作温度-10° ~45° ,存放温度-20° ~125°
环境湿度	不凝露，不结霜
气体	禁止有可燃气体和导电灰尘
重量	300克

#### Mechanical Specification

Input Voltage	20~50V DC
Output current	1.5A~4.5A
Temperature	Working temperature -10° ~45° ,stocking temperature -20° ~70°
Humidity	Not condensation , no water droplets
Gas	Prohibition of combustible gases and conductive dust
Weight	300g

#### Mechanical Dimension (mm)

